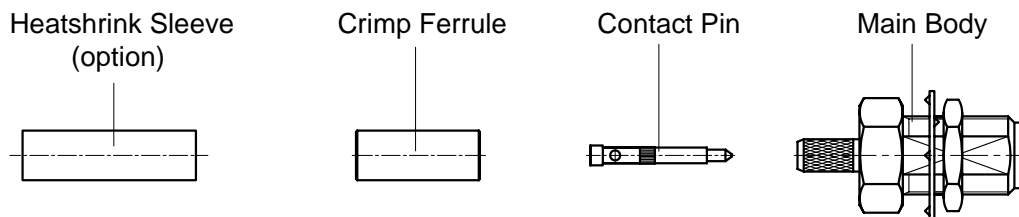


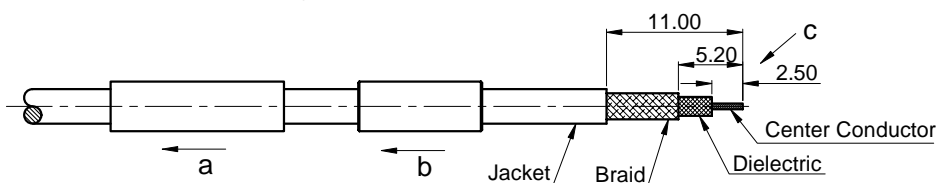
P/N: 61-02-1B00-025 (REV. A)

Description: RP SMA Straight Female Bulkhead Crimp for RG174/LMR100/RG316 Cable



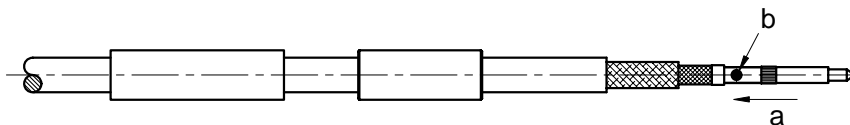
## STEP 1

- a. Slide the Heatshrink Sleeve onto the cable (option).
- b. Slide the Crimp Ferrule onto the cable.
- c. Strip the cable according to the dimensions as below.



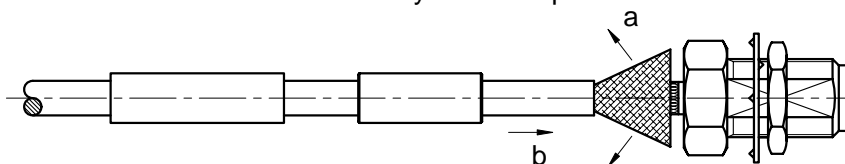
## STEP 2

- a. Slide the Contact Pin on until it bottom against the cable dielectric..
- b. Solder the Contact Pin onto the cable.



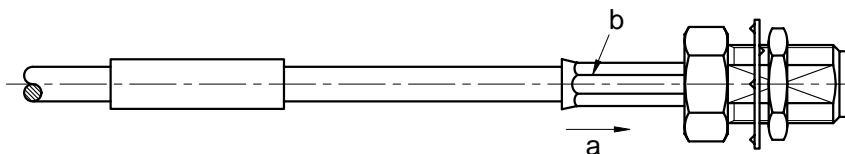
## STEP 3

- a. Fan the braid.
- b. Slide the cable into the Main Body until it stops.



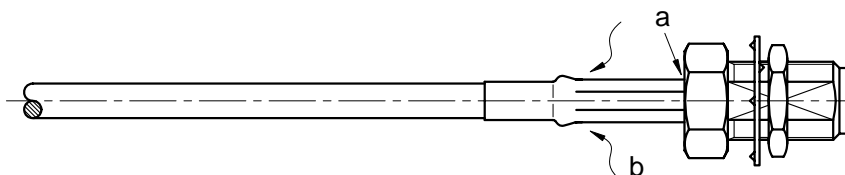
## STEP 4

- a. Slide the Crimp Ferrule over the braid.
- b. Crimp the Crimp Ferrule with crimping tool (3.25mm HEX.).



## STEP 5

- a. Cut the excess of braid if necessary.
- b. Slide the Heatshrink Sleeve over the Crimp Ferrule and heatshrink it in place (option).



Note: Dimensions in millimeters (mm).